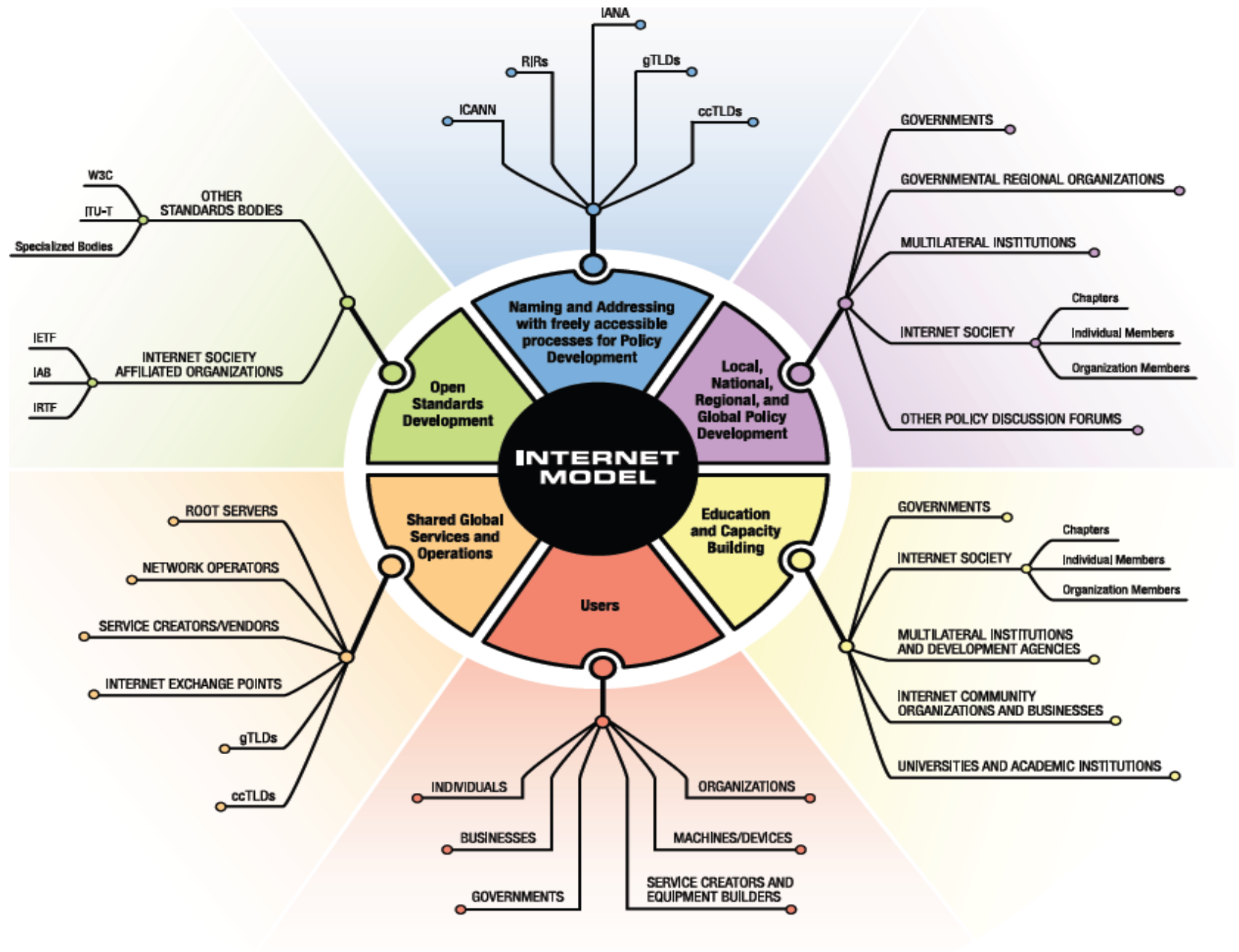


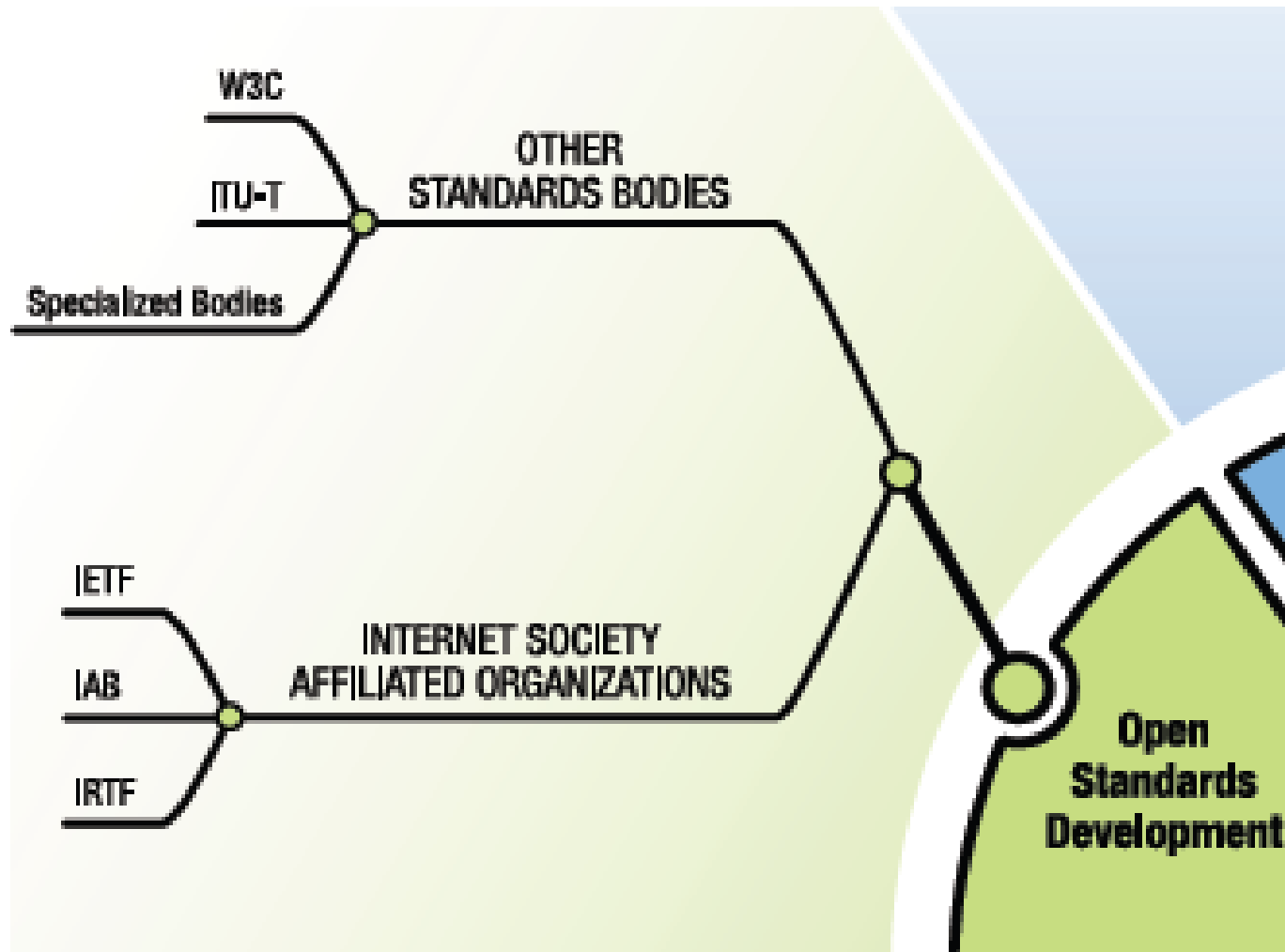
EURALO and the RIPE Community

*An Introduction by
Dr. Olivier MJ Crépin-Leblond
EURALO Chair*

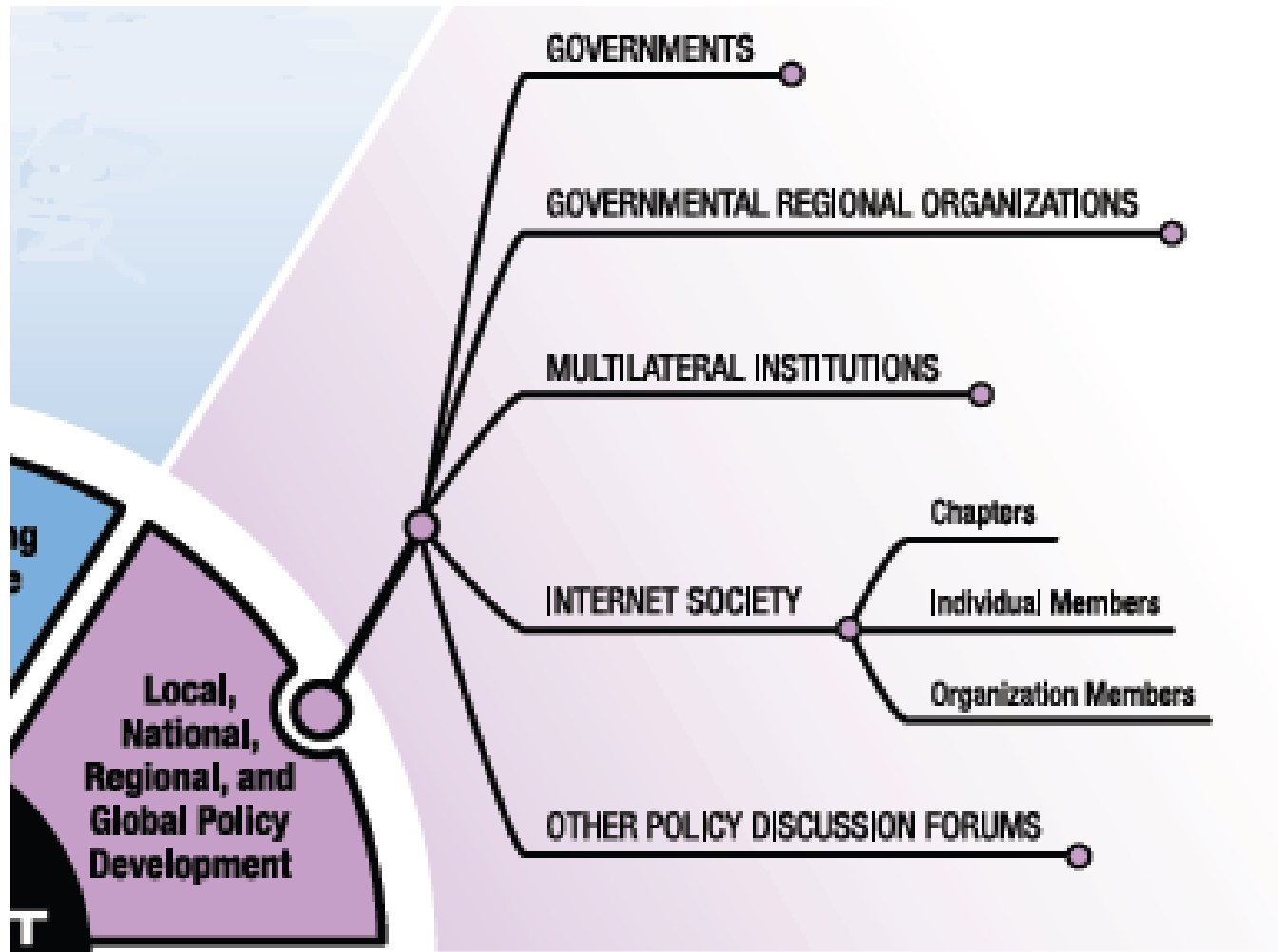
RIPE76 - Marseilles 17 May 2018



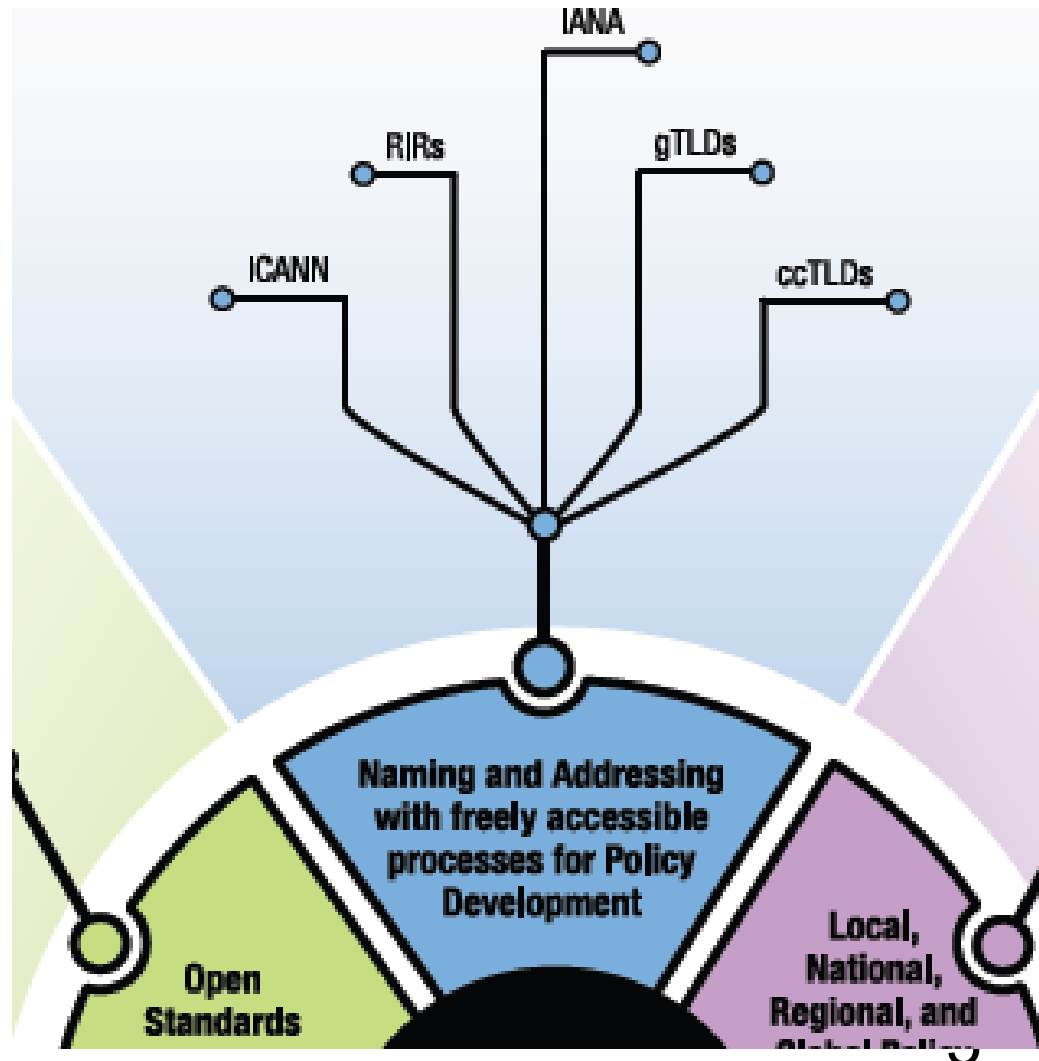
Multi-stakeholder standards



Multi-stakeholder policy



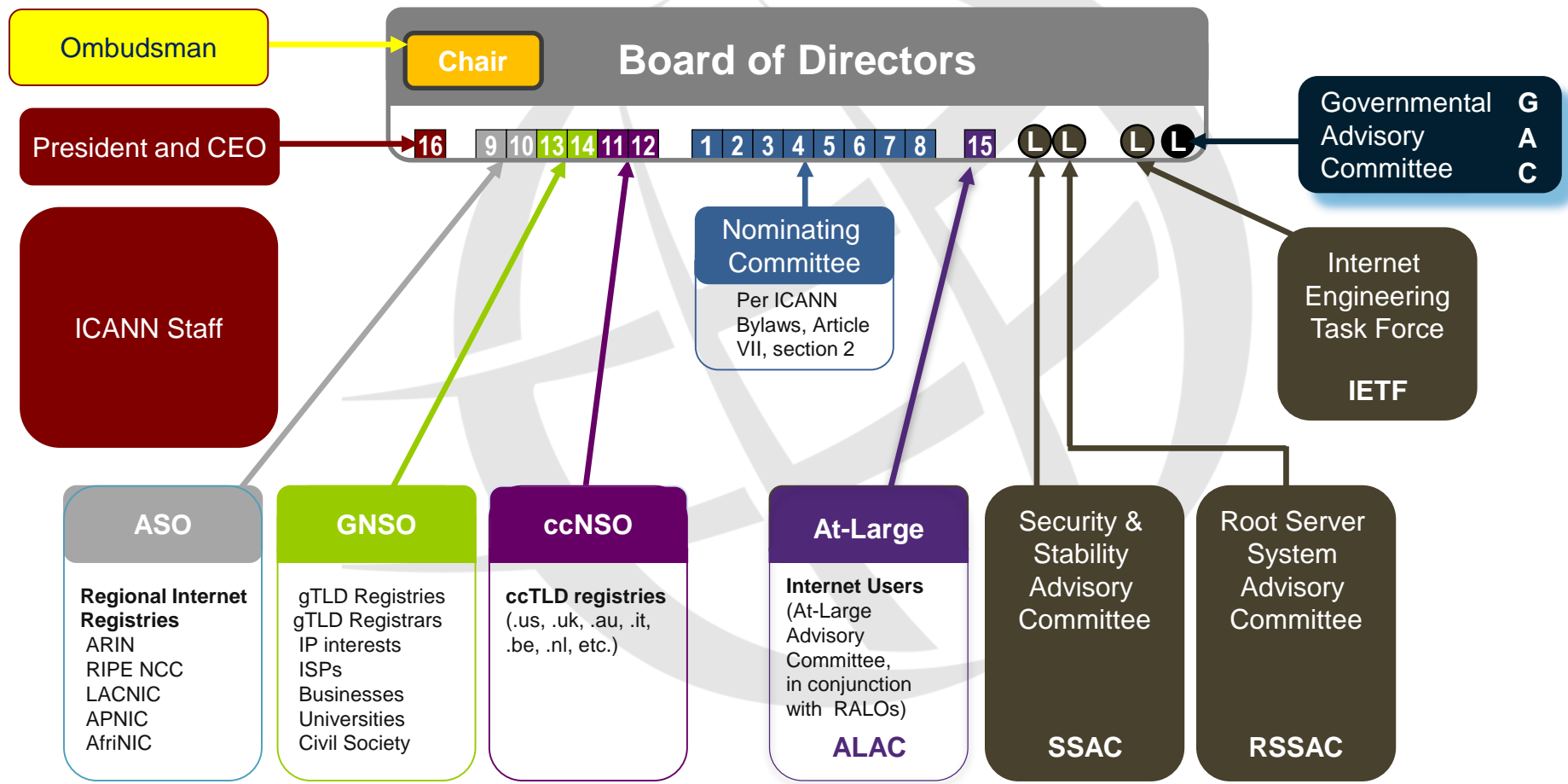
Multi-stakeholder naming and addressing



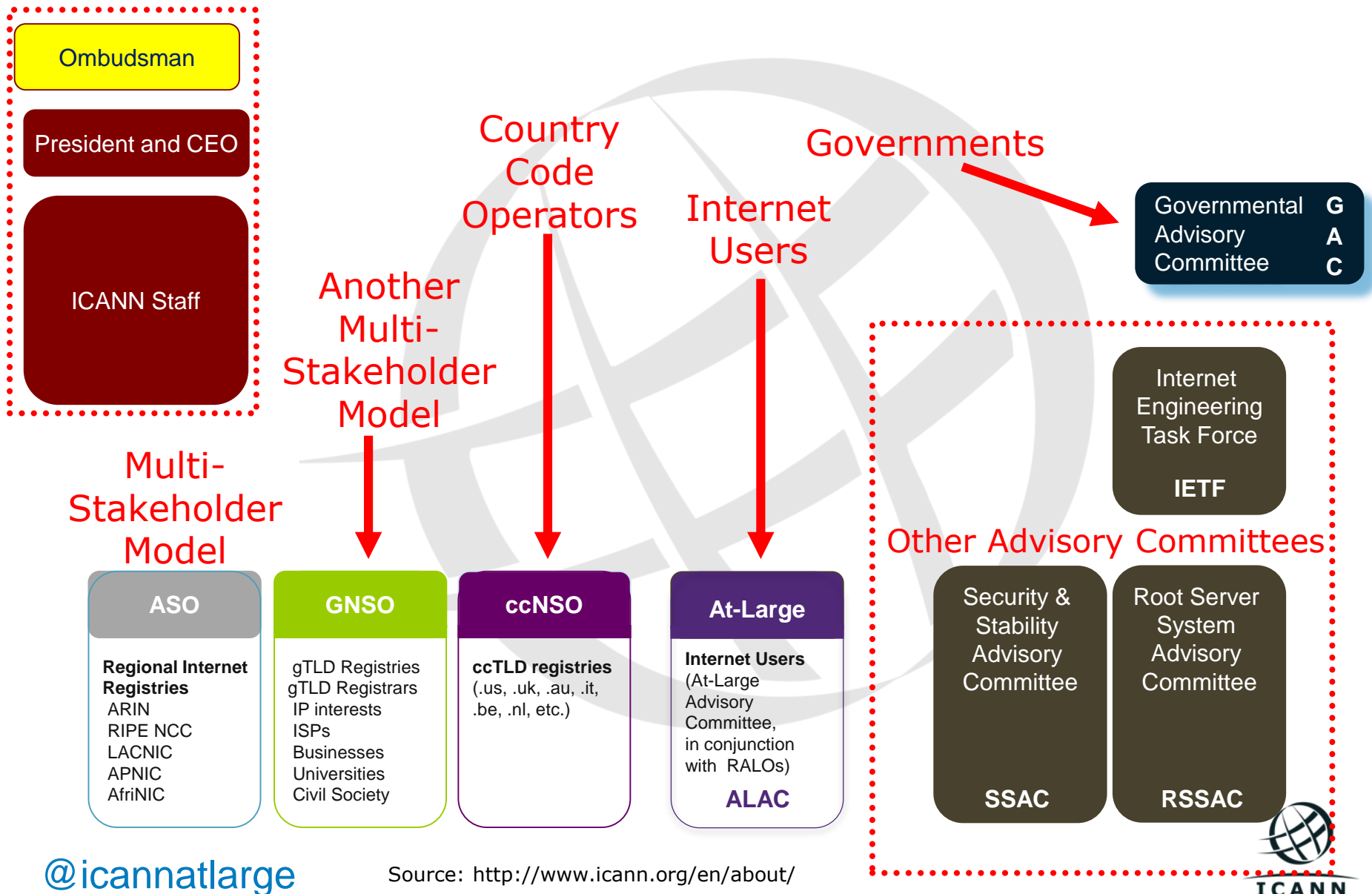


So why am I here?

ICANN Multi-Stakeholder Model

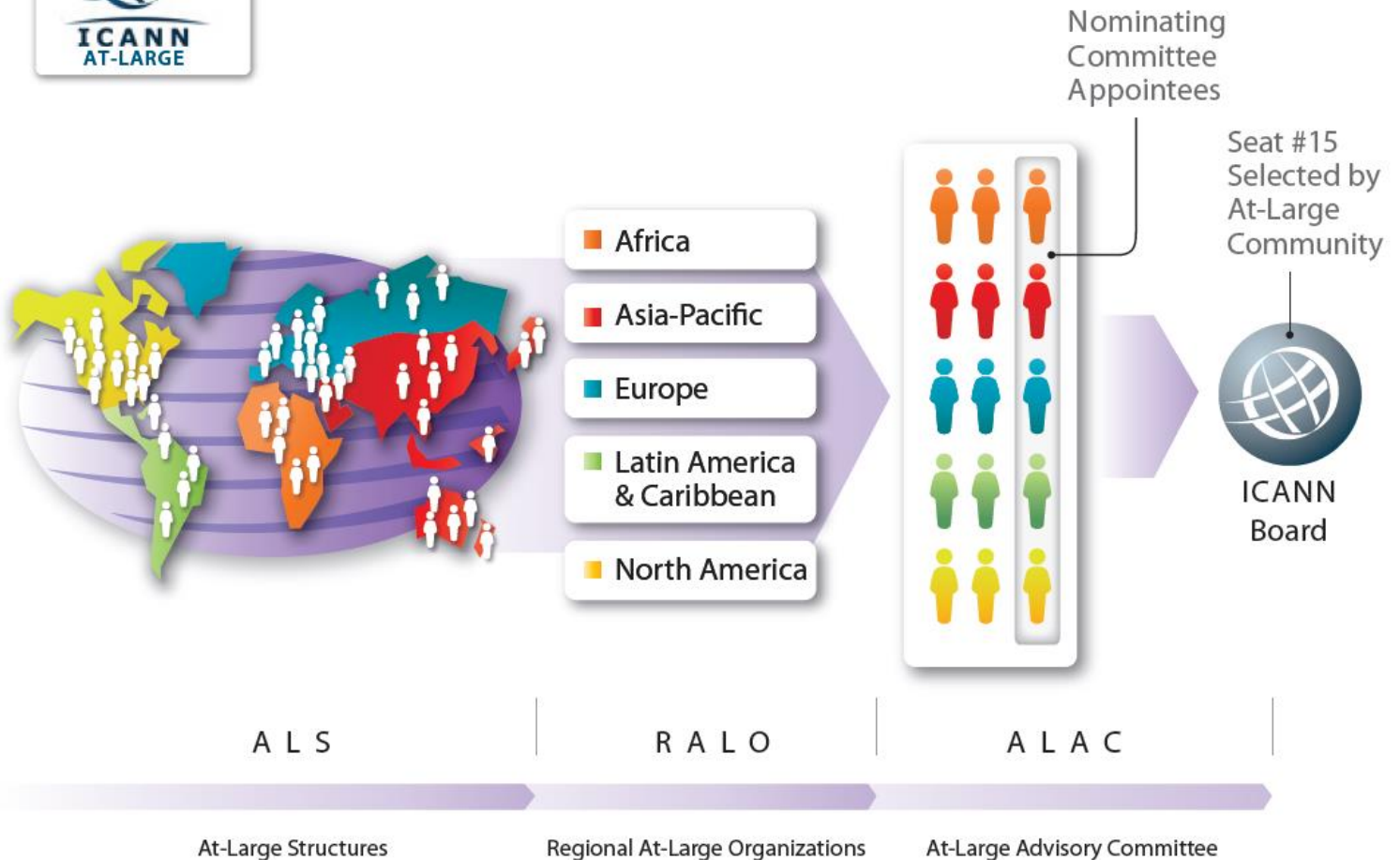


Staff ICANN Multi-Stakeholder Model





At-Large Organizational Diagram



Map is for representational purposes only.

For more detailed information see the Google Map of the RALOs and ALSes at: <http://www.atlarge.icann.org/maps/>

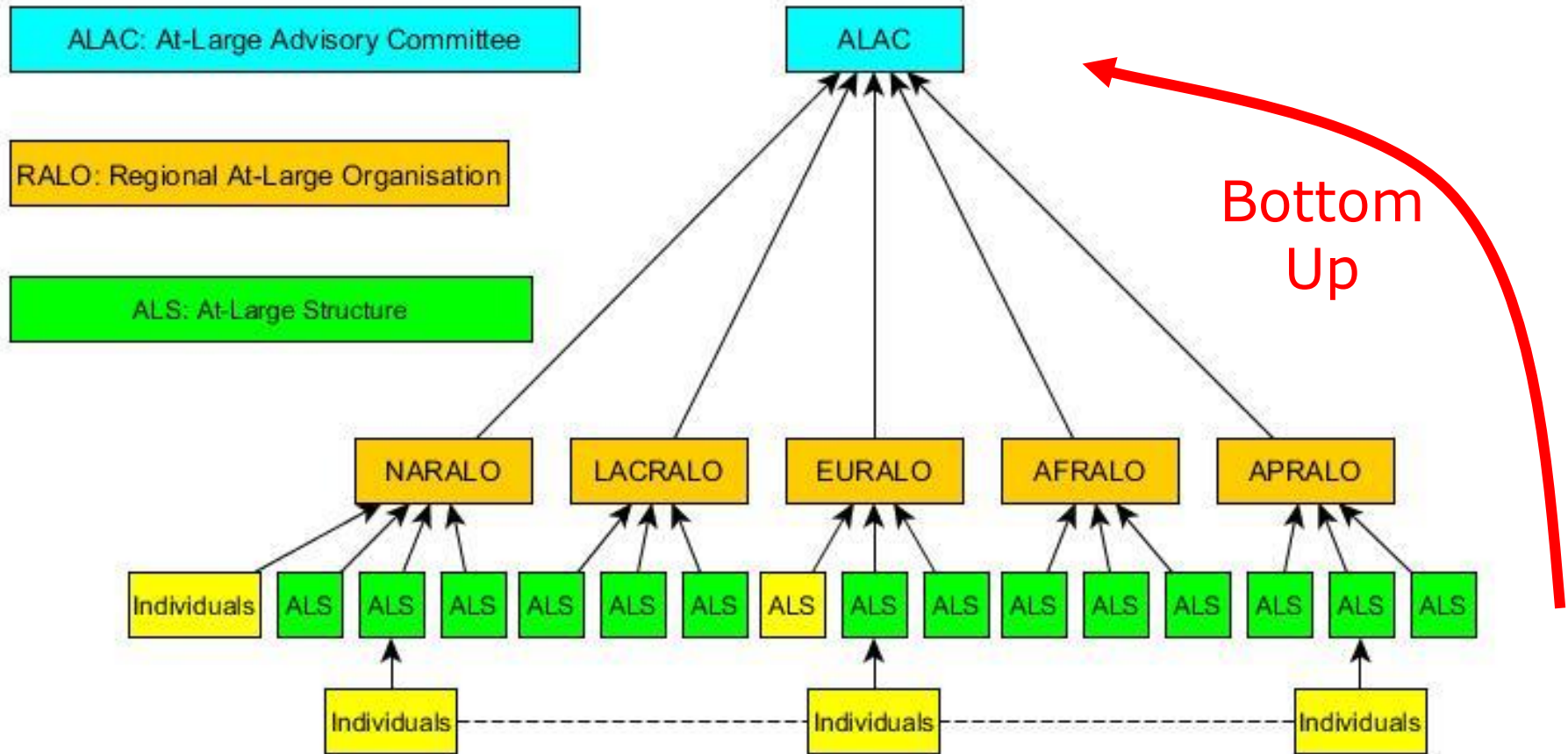
Full country to region list: <http://www.icann.org/en/meetings/montreal/geo-regions-topic.htm>

Source: <http://www.atlarge.icann.org/orgchart>

What is At-Large?

- Community of **Individual Internet Users** : 200+ At-Large Structures (ALS) and hundreds of individual members
- An ALS is a group (computer clubs, associations, learning centers etc.) representing the views of individual Internet users
- They are active throughout the world and organised at a regional level (RALOs)
- What does it the At-Large Advisory Committee (ALAC) do?
 - Issue comments in response to ICANN **public comment** requests.
 - Issue comments on **any subject**, process, structure, policy or topic which it deems important to comment on in ICANN – both to processes and to the ICANN Board
 - Issue comments about **any external process** linked to ICANN in one way or other and which affects Internet users.
 - Takes part in **cross-community working groups** (CWGs) within ICANN.
 - Relays the ICANN **message** to Internet Users around the world
 - Coordinates the Filing of **new gTLD objections** from the community

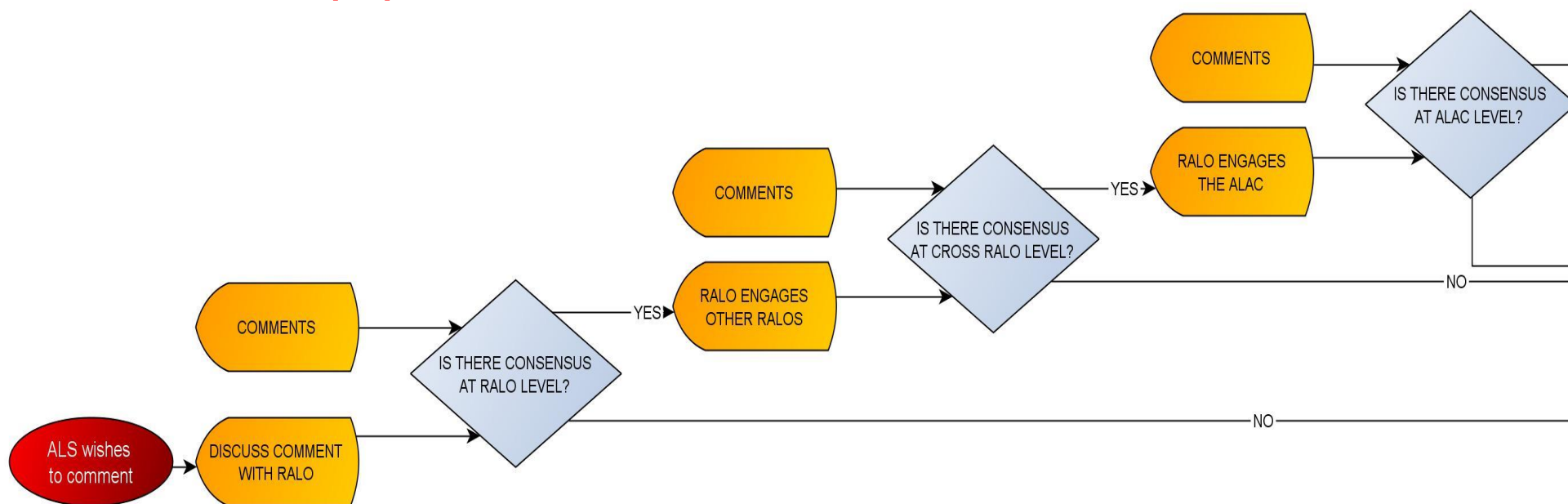
At-Large Bottom-up process to the ALAC





Example of At-Large Structure Input

Bottom-up process



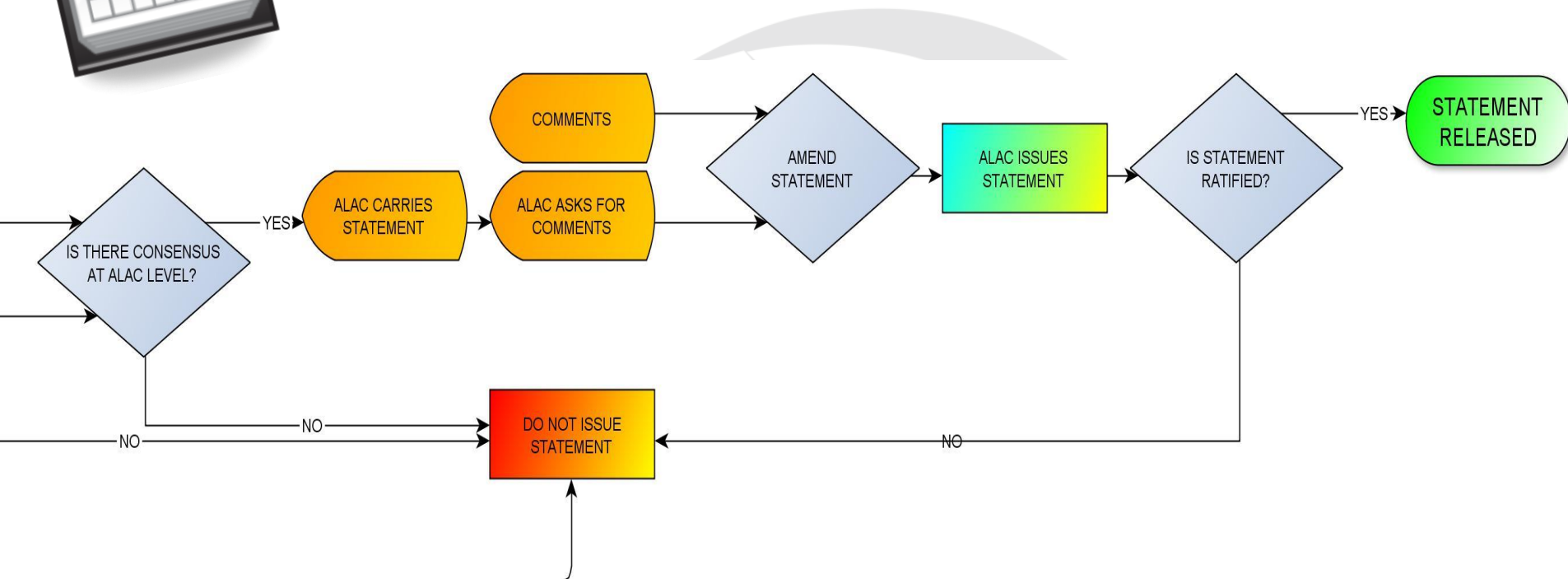
**RALO
DISCUSSION**

**CROSS-RALO
DISCUSSION**

**SEND TO
ALAC**



Bottom-up process



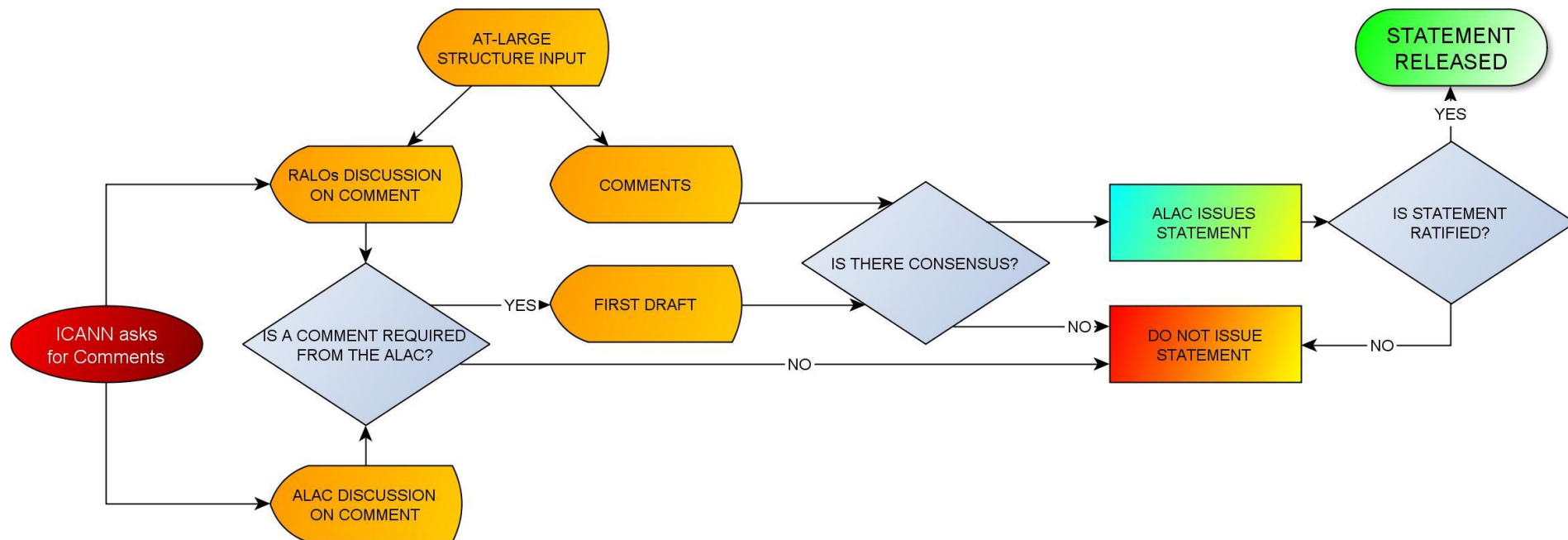
ALAC DISCUSSION

ALAC
VOTE

STATEMENT
RELEASED

Example of At-Large Structure Input

Response to Public Comment Request



Bottom-up process



“So why are you here?”

So why are you here?

- At-Large brings input in ICANN from end users processes. Some of these issues relate to IP addresses.
- The level of awareness on the RIR and the EURALO level is quite low.
- RIRs have a number of policies that have relevance that invite community participation.
- Cross pollination across I* organisations and their component communities is important
- Encourage folks to get involved in the RIPE policy process and vice versa
- EURALO and RIPE NCC signed a MoU for collaboration at the AGM ICANN meeting in Abu Dhabi (November 2017)

Source: <http://www.atlarge.icann.org/orgchart>

Some important links:

At-Large Correspondence:

<http://www.atlarge.icann.org/policy-summary>

At-Large Policy Development

<https://community.icann.org/x/bwFO>

At-Large Individual Users

<https://www.individualusers.org>

At-Large Working Groups

<https://community.icann.org/x/loli>

RIPE NCC At-Large MoU

<https://community.icann.org/x/npVEB>

@icannatlarge



Thank You & Questions?



<http://atlarge.icann.org/>

<http://www.euralo.org/>

Contact: staff@atlarge.icann.org

@icannatlarge

